

EUROPEAN JOURNAL OF CARDIO-THORACIC SURGERY

**Needle tract implantation clearly visualized by computed tomography following
needle biopsy of malignant mesothelioma**

Kazuya Suzuki, Kazuya Takamochi, Kazuhito Funai and Teruhisa Kazui

Eur J Cardiothorac Surg 2006;29:1051-

DOI: 10.1016/j.ejcts.2006.03.016

This information is current as of February 23, 2007

The online version of this article, along with updated information and services, is
located on the World Wide Web at:

<http://ejcts.ctsnetjournals.org/cgi/content/full/29/6/1051>

The European Journal of Cardio-thoracic Surgery is the official Journal of the European Association for Cardio-thoracic Surgery and the European Society of Thoracic Surgeons. Copyright © 2006 by European Association for Cardio-Thoracic Surgery. Published by Elsevier B.V. All rights reserved. Print ISSN: 1010-7940.

Images in cardio-thoracic surgery

Needle tract implantation clearly visualized by computed tomography following needle biopsy of malignant mesothelioma

Kazuya Suzuki^{*}, Kazuya Takamochi, Kazuhito Funai, Teruhisa Kazui

First Department of Surgery, Hamamatsu University School of Medicine, 1-20-1 Handayama Hamamatsu 431-3192, Japan

Received 17 February 2006; accepted 7 March 2006; Available online 3 May 2006

Keywords: Needle tract implantation; Needle biopsy; Malignant mesothelioma

CT scans of a 51-year-old man during and after needle biopsy for local recurrence following extra-pleural pneumonectomy for malignant mesothelioma, clearly revealed tumor growth along the needle tract (Fig. 1A and B). Needle

tract implantation (Fig. 2A and B) visualized clearly by CT imaging as in the present case is extremely rare.

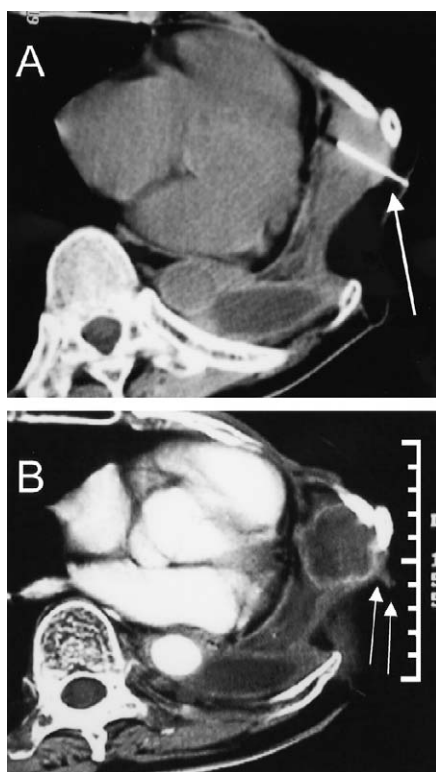


Fig. 1. CT scan during needle biopsy of local recurrence (A, long arrow) following extra-pleural pneumonectomy, and CT scan 45 days later demonstrating the tumor invasion along the needle tract (B, short arrows).

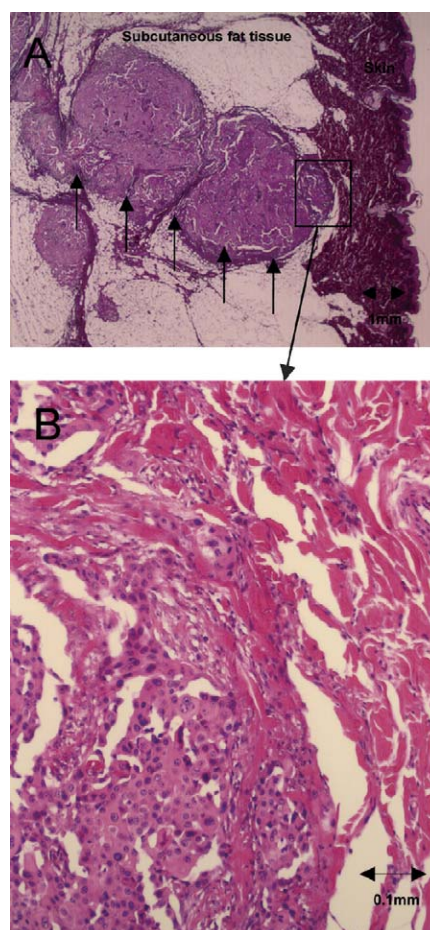


Fig. 2. Histological sections showing tumor growth along the needle tract (A, arrows) and pathological features of malignant mesothelioma. (B) Stain: hematoxylin and eosin.

^{*} Corresponding author. Tel.: +81 53 435 2276; fax: +81 53 435 2272.
E-mail address: kazuya36@hama-med.ac.jp (K. Suzuki).

**Needle tract implantation clearly visualized by computed tomography following
needle biopsy of malignant mesothelioma**

Kazuya Suzuki, Kazuya Takamochi, Kazuhito Funai and Teruhisa Kazui
Eur J Cardiothorac Surg 2006;29:1051-
DOI: 10.1016/j.ejcts.2006.03.016

This information is current as of February 23, 2007

Updated Information & Services	including high-resolution figures, can be found at: http://ejcts.ctsnetjournals.org/cgi/content/full/29/6/1051
Subspecialty Collections	This article, along with others on similar topics, appears in the following collection(s): Chest wall http://ejcts.ctsnetjournals.org/cgi/collection/chest_wall Pleura http://ejcts.ctsnetjournals.org/cgi/collection/pleura
Permissions & Licensing	Information about reproducing this article in parts (figures, tables) or in its entirety can be found online at: http://ejcts.ctsnetjournals.org/misc/Permissions.shtml
Reprints	Information about ordering reprints can be found online: http://ejcts.ctsnetjournals.org/misc/reprints.shtml

EUROPEAN JOURNAL OF
CARDIO-THORACIC
SURGERY